



ANCHORAGE
MUSEUM

TODAY

MAMA, WHAT IN THIS
HOUSE CAN CATCH ON
FIRE? MAMA, WHAT
IN THIS HOUSE CAN
CATCH ON FIRE? MAMA
WHAT IN THIS HOUSE
CAN CATCH ON FIRE?
MAMA, WHAT IN THIS
HOUSE CAN CATCH ON
FIRE? MAMA, WHAT
IN THIS HOUSE CAN
CATCH ON FIRE? MAMA
WHAT IN THIS HOUSE
CAN CATCH ON FIRE?
MAMA, WHAT IN THIS
HOUSE CAN CATCH ON

Anchorage Museum Association

Board of Directors

Susan Knowles, *Chair*
Evan Rose, *Vice Chair*
Todd Bell, *Treasurer*
Jim Kostka, *Secretary*
Barbara Donatelli
Laura Emerson
Heather Flynn
James Kallman
John Levy
Peter Michalski
Tim Thompson
Louis Ulmer

Admission

Free to museum members
\$15 adult
\$12 Alaska resident adult
\$10 senior/student/military
\$7 age 3 to 12
Free age 2 and younger

Museum Membership

(907) 929-9228 or online

Volunteer

(907) 929-9297

Event Rental

(907) 929-9261

ATWOOD RESOURCE CENTER

(907) 929-9235

Parking

Public parking in underground garage on weekends and evenings, with handicap parking during all regular museum hours

Anchorage Museum

at Rasmuson Center

625 C Street
Anchorage, Alaska 99501
(907) 929-9200 tel
(907) 929-9290 fax
www.anchagemuseum.org

Anchorage Museum TODAY

November/December ©2013
Anchorage Museum Association
Editor: Sarah Henning

The Anchorage Museum at Rasmuson Center is owned by the Municipality of Anchorage and operated under contract by the Anchorage Museum Association, a nonprofit 501(c)(3) organization. The museum is accredited by the American Alliance of Museums and is supported in part by annual contributions from the Anchorage Museum Association, the Anchorage Museum Foundation, the Municipality of Anchorage and private, corporate and foundation funds.

IMAGES

COVER: Amy Meissner, *Spontaneous Combustion*, wool, cotton, domestic linens, 2013, Brian Adams

P.3 (clockwise): Light Brigade, Nicholas Bradford; Chijel, feather headdress, Willow, Alaska, late 19th century, eagle and goose feathers, red wool, sinew, Chris Arend/Anchorage Museum; holidays, Chris Arend; Louise Gallop, Chris Arend; *Ganga*, National Museum of Denmark; Lights Out, stock; Katie Alley, *Batik of Sun*, dyed cotton cloth using wax resist process

BACK PAGE: Holidays and boy, Chris Arend; *Ganga*, National Museum of Denmark

letter from the director



THE ANCHORAGE MUSEUM is pleased to participate in grassroots efforts such as the Anchorage Economic

Development Corporation's Live Work Play initiative, which is focused on community improvement and engagement for the people who live in Anchorage.

As we think about the role the museum plays in the community and the ways the nonprofit sector can be a part of the conversation about the future of our city, we know that a rich cultural experience comes from human interaction. At the museum we shape our exhibitions and programs so they provide shared experiences — ways for people to enjoy, interact, evaluate and participate.

We are excited about new ideas, and how these ideas offer ways for people of all ages and backgrounds to connect. We know this can mean taking risks. We know these are things that can't be monetized.

Our placemaking efforts are intended to develop a collaborative vision and to debunk the myth of an unconnected North. We know the North is a place of great vitality;

we know Anchorage is a place that's inclusive and welcoming. We work each day to make sure the museum is a reflection of that community, and to outwardly project our internal goals of providing an enriching environment.

As you consider your year-end giving, we know that the community has many needs and many nonprofits that do tremendous work to make this a good place to live, work and play. We hope the museum, too, has touched your life — whether through a child's school field trip, the lift provided by First Friday "elevator music," a lecture that stretched your mind, or an exhibition that offered a new view on our place or ourselves.

As we look forward to next year, we will work hard on big ideas, but we know that small gestures count, too. We want to help make Anchorage a place that is valued by residents and visitors, and be part of what defines life in the North as rich, distinct, varied and active.

Julie Decker

INTERIM DIRECTOR/CHIEF CURATOR

NEWS AND NOTES

NOAA GRANTS ANCHORAGE MUSEUM \$65,000 FOR GYRE

THE NATIONAL OCEANIC and Atmospheric Administration (NOAA) Marine Debris Program has made a generous \$65,000 grant to the Anchorage Museum to support the *Gyre* exhibition. *Gyre*, which opens Feb. 7, 2014, tells a global ocean debris story through the work of more than 20 artists from around the world. The exhibition includes an Alaska-specific section featuring scientific results of the Alaska SeaLife Center's June expedition documenting and collecting trash along Alaska's coastline.

The NOAA Marine Debris Program is a leader in addressing the global marine debris crisis. NOAA conducts

reduction, prevention and research activities, and offers grants for ocean debris prevention, education and outreach. Learn more at marinedebris.noaa.gov.

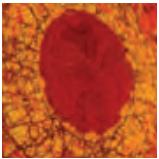


Cleanup in Hallo Bay, June 2013

KIP EVANS



table of contents



- 4 EARTH, FIRE AND FIBRE**
Winners named in
biennial juried exhibition



- 9 DENA'INA INNOVATION**
Dioramas, interactives
bring traditions to life



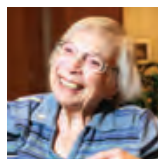
- 7 LIGHTS OUT**
Late-night creative
blowout celebrates
life in the North



- 10 HAPPY HOLIDAYS**
Yule be sorry if you miss
Wonderland of Toys



- 8 COMICS MEET HISTORY**
Epic Inuit journey
comes to life



- 11 IN MEMORIAM**
We say goodbye to
three special volunteers

EARTH, FIRE AND FIBRE XXIX

On view through Jan. 5, 2014

IN OUR MODERN LIVES, handmade objects offer a coveted and rare connection between what we have and who we are. That's why craft, however broadly it's defined, continues to be so meaningful.

Earth, Fire and Fibre XXIX, the Anchorage Museum's biennial craft exhibition, is one of the state's longest running juried exhibitions. It showcases Alaska artists working with traditional craft materials such as fibre, clay and wood. Selected artworks are chosen because of the artists' superb skills, but also for their forward-thinking concepts and methods.

Anchorage artist Amy Meissner won the prestigious *Earth, Fire and Fibre* Juror's Choice Award for *Spontaneous Combustion*, an art quilt.

This year's entries included 360 works of art by 119 Alaska artists. The juror selected 41 works of art by 34 artists for the exhibition. This exhibition was juried by Andrew Glasgow of Asheville, N.C. Glasgow's resume includes the American Craft Council, Southern Highland Craft Guide and Birmingham (Ala.) Museum of Art.

After it closes at the Anchorage Museum, the exhibition will travel the state. Exhibition dates are Jan. 31 to March 1, 2014 at the Alaska State Museum in Juneau and May 2-31, 2014 at the Fairbanks Arts Association's Bear Gallery.

This exhibition is funded in part by a grant from the Alaska State Council on the Arts and the National Endowment for the Arts, a federal agency.

AWARD WINNERS

THE FOLLOWING ARTISTS RECEIVED AWARDS FOR THEIR *EARTH, FIRE AND FIBRE* SUBMISSIONS:

\$1,500 JUROR'S CHOICE AWARD

Amy Meissner, Anchorage, *Spontaneous Combustion*, wool, cotton, domestic linens, 2013
(featured on the cover)

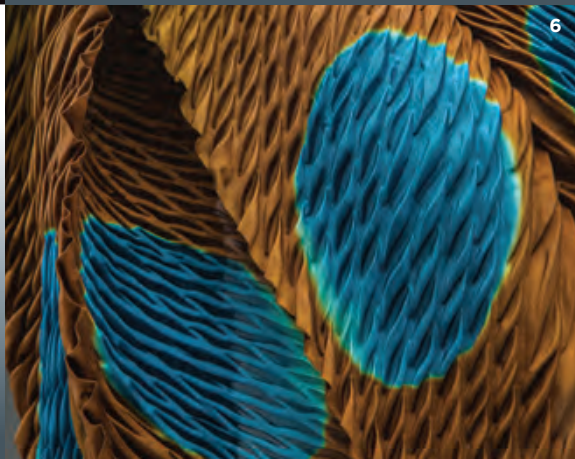
\$500 AWARDS

- 1 Laël Gordon, Seward, *Endgrain Parquet Cabinet*, Douglas fir, eastern maple, 2013
- 2 Sandra Mander, Auke Bay, *White Bird*, porcelain, 2013
- 3 Diane Melms, Anchorage, *Tangerine Sky*, fibre, 2013
- 4 Kathryn Rousso, Ketchikan, *All Worlds Intertwined*, red and yellow cedar bark, woven abaca, 2013

OTHER IMAGES: 5) Tom Coghill, *Burnt Pine Platter*, wood, gesso paint, 2013
6) Wendy Smith-Wood, *Blue-Eyed Bird*, silk shibori, 2013 7) Gillian Brinnand-Nannestad, *Lovebirds*, canary wood, 2013



7



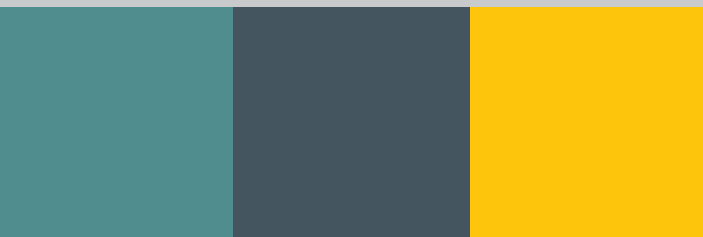
6



1



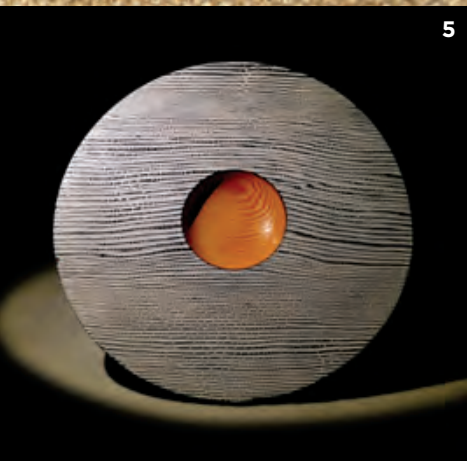
2



4



3



5

NOVEMBER/DECEMBER



CHRIS WEID



COURTESY OF HIVSHU PEARY

WELLS FARGO FREE DAY

ALASKA NATIVE HERITAGE MONTH

2 to 4 p.m. Sunday, Nov. 10

Celebrate Alaska Native cultures! Enjoy a performance by the Yurapik Drummers and Dancers and demonstrations by Alutiiq carver Andrew Abyo and the Alaska Native Heritage Center's Native Youth Olympic team. Learn how to use traditional Yup'ik story knives to tell a tale. Museum general admission is free all day thanks to Wells Fargo.

PERFORMANCE


GREENLANDIC DRUMMING AND SINGING

8 p.m. Friday, Dec. 6

Greenlandic musician, storyteller and educator Hivshu Peary was born in the northernmost village in the world, Huarapaluk (Siorapaluk), Greenland. He performs traditional stories and songs using a *qilaat*, an oval drum covered with the bladder of a polar bear. This event is held in conjunction with the graphic novel exhibition *Ganga: Drawing the Past*. Free


EVENTS

CULTURAL GUIDES Q&A

 Various weekends through Jan. 5.


Alaska Native youth assist visitors and answer questions in the *Dena'inaq' Huch'ulyeshi* exhibition. Included with admission

FIRST FRIDAY

 6 to 9 p.m. Nov. 1
Enjoy a craft brew event, a lecture by Polish artist Marek Ranis, live music by Rebel Blues in Muse and more. Free


OPEN CRAFT

MIDNIGHT SUN BREW


 7 p.m. Friday, Nov. 1
Raise a glass to the art of making beer. Lee Ellis, lead brewer at Midnight Sun Brewing Company, demonstrates his craft while you sip samples. Ages 21 and older. Registration required online. \$10 member/\$15 non-member

LECTURE


MAREK RANIS

 8 p.m. Friday, Nov. 1
Polish artist Marek Ranis discusses how he incorporates social, political and ecological issues into his artwork. Free

DENA'INA EXPERTS ON THE FLOOR


 10 a.m. to 1 p.m. and 2 to 5 p.m. Nov. 6-9 and 2 to 5 p.m. Nov. 10
Take advantage of this rare opportunity to speak face-to-face with experts about Dena'ina history and lifeways in *Dena'inaq' Huch'ulyeshi*. Included with admission

SMITHSONIAN SPOTLIGHT CURATOR INSIGHTS


 7 p.m. Thursday, Nov. 7
Join curator Aaron Leggett (Dena'ina) for an insider view of *Dena'inaq' Huch'ulyeshi*. Free

BROWN BAG FILM SERIES

TEBUGHNA: THE BEACH PEOPLE


 Noon Wednesday, Nov. 13
Watch how life in an Athabaskan village was transformed over a two-decade period of rapid change. Included with admission

LITERARY EVENT ON THE EDGE OF PUBLISHING


 7 p.m. Thursday, Nov. 14
Three Alaska authors discuss the collaborative process they used to create the novella collection *Weathered Edge*. In association with 49 Writers. Free

TODDLER TIME

ALASKA NATIVE HERITAGE MONTH


 10:30 a.m. Friday and Saturday, Nov. 15-16
Toddlers learn a new dance and play dress-up to celebrate Alaska Native Heritage Month. Included with admission

DECEMBER SHOP SALE


 10 a.m. to 6 p.m. Dec. 3-7 and noon to 6 p.m. Dec. 8
The museum shop has great gifts for the entire family. Museum members receive 30 percent off all regularly priced items and non-members receive 20 percent off. Free

SMITHSONIAN SPOTLIGHT

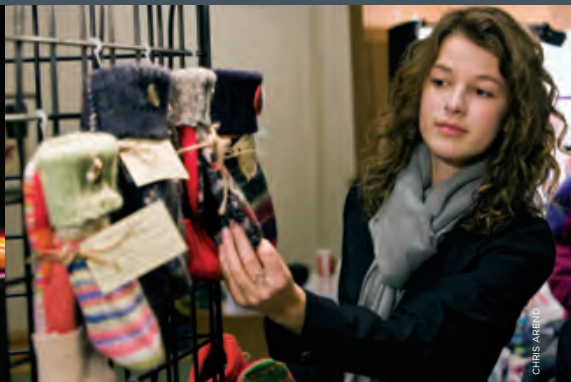
JOEL ISAAK

 7 p.m. Thursday, Dec. 5
Dena'ina artist Joel Isak discusses how he combines traditional Native materials and methods with contemporary industrial processes. Free

FIRST FRIDAY

 6 to 9 p.m. Dec. 6
Enjoy live music by Hivshu Peary of Greenland, and programs for teens and adults by Bjarne Gronnow from the National Museum of Denmark. Live music by Silvertrain in Muse. Free

MBER 2013



CHRIS AREND

FUNDRAISER

LIGHTS OUT

8 p.m. to midnight Friday, Nov. 8

Light up the night at this creative blowout celebrating Alaska's long winter nights. Check out LED-adorned dancers, DJ Spencer Lee, a Skinny Raven/Her Tern footwear fashion show, demos on the astounding science of fluorescence, food trucks and more. Ages 21 and older. Proceeds benefit the museum's exhibitions and programs. \$20 member/\$30 non-member


CRAFTS WEEKEND


READALASKA BOOK FAIR

10 a.m. to 6 p.m. Friday and Saturday, Nov. 29-30 and noon to 6 p.m. Sunday, Dec. 1


Buy local, save money and beat the holiday rush at Anchorage's premier juried crafts event, celebrating its 25th year. Nearly 50 Alaska artists offer a wide array of jewelry, pottery, wearable art, glass, woodwork and more. You can also meet Alaska authors and buy signed books at the ReadAlaska Book Fair. Museum members receive a 10 percent discount on purchases. Free


TEEN STUDIO SCIENCE AND IMAGINATION

 6 p.m. Friday, Dec. 6
Teens get a behind-the-scenes look at the graphic novel-style exhibition *Ganga* and create their own short comics. Free

LECTURE
 **DRAWING THE PAST**
6:30 p.m. Friday, Dec. 6
Bjarne Gronnow from the National Museum of Denmark discusses *Ganga*. Free

**WELLS FARGO FREE DAY
HOLIDAY CONCERT**
 1 to 4 p.m. Sunday, Dec. 8
Hear those sleigh bells jingling at our annual holiday music celebration. Free

**BROWN BAG FILM SERIES
TALKING ALASKA:
DENA'INA**
 Noon Wednesday, Dec. 11
An overview of the Dena'ina language featuring footage of Shem Pete. Included with admission

**HANDS-ON
WINTER BREAK**
 2 to 4 p.m. Dec. 28-29, Dec. 31, Jan. 2-3
Build an indoor "snow fort," examine a snowflake and learn the science behind snow. Included with admission

**NEW YEAR'S EVE
DINNER AT MUSE**
 Seatings from 6 to 9:30 p.m. Tuesday, Dec. 31
Ring in 2014 with an unforgettable five course, *prix fixe* dinner in Muse. Reservations required at 929-9210.

CLASSES

Register at anchoragemuseum.org or (907) 929-9280.

TEEN COMICS WORKSHOP
1 to 4 p.m. Saturday and Sunday, Dec. 28-29

**ATHABASCAN QUILL
WORKSHOP**
10 a.m. to 4 p.m. Saturday, Nov. 16 and noon to 4 p.m. Sunday, Nov. 17

PLANETARIUM PARTNER PROGRAMS

Schedule valid through Dec. 31. Prices vary from \$4 to \$10. Buy tickets at anchoragemuseum.org.

**DINOSAUR PASSAGE
TO PANGAEA**
10:30 a.m. Saturday

EARTH, MOON AND SUN
11:30 a.m. Saturday

LIFE: A COSMIC STORY
1:30 p.m. Saturday and Sunday

INTO THE DEEP
2:30 p.m. Saturday and Sunday

SUPERVOLCANOES
3:30 p.m. Saturday and Sunday

ASTRONOMY ALIVE
6:30 p.m. First Friday

**LED ZEPPELIN COSMIC
LIGHT SHOW**
7:30 p.m. Friday, Nov. 1

**PINK FLOYD: DARK SIDE
OF THE MOON**
7:30 p.m. Friday, Dec. 6

Learn more about our programs at anchoragemuseum.org.

**ALASKA NATIVE
HERITAGE CENTER
INTERTRIBAL GATHERING/
DENA'INA DAY**
10 to 5 p.m. Saturday, Nov. 2
Celebrate Alaska Native and American Indian Heritage month at the Alaska Native Heritage Center's annual Intertribal Gathering. Free

**Z.J. LOUSSAC
PUBLIC LIBRARY
TEEN UNDERGROUND: COMICS
AND ILLUSTRATION STUDIO**
2 to 4 p.m. Saturday, Dec. 7
Taught by artist Shanley McCauley. Held at the Z.J. Loussac Public Library. Free

**COOK INLET
HISTORICAL SOCIETY
WORKING AS A DENA'INA
ANTHROPOLOGIST CONDUCTING
RESEARCH WITH MY PEOPLE**
7:30 p.m. Thursday, Nov. 21
Speaker: Karen Evanoff. Free

Events are subject to change. During free events, fees still apply for planetarium shows.



Qanga, National Museum of Denmark

QANGA DRAWING THE PAST

On view Nov. 17 through Jan. 12, 2014

AN EPIC INUIT JOURNEY taken 4,500 years ago comes to life in *Qanga: Drawing the Past*, a graphic novel-style exhibition that combines music, art, storytelling and archaeology.

Working from Inuit oral tradition and archaeological evidence, a graphic novelist reconstructed the story of the Inuit people who made the first migration from Canada to Greenland.

It's a compelling tale of day-to-day survival in the Arctic. Unstable ice conditions, changes in weather and a restlessness for travel caused one group to forge frozen straits for new land. Guided by spirits and elders, they hunted polar bears and seals, lost loved ones to thin ice and taught their children how to live among the animals.

Qanga was an international undertaking inspired by Danish de-colonizing efforts. During the last 30 years, the National Museum of Denmark has repatriated more than 35,000 archaeological and ethnographic objects to Greenland's National Museum and Archives. The National Museum of Denmark

collaborated closely with Greenlandic artist and Nordic Council Children's Literature Prize 2013 nominee Nuka Godtfredsen to present fictional narratives of early human settlement in Greenland.

The exhibition features watercolors from two graphic novels by Godtfredsen and six songs by Danish musicians and composers Kristian Bjerre Harting and Lill Rastad Bjørst. The music evokes the emotion of the paintings, from redemption to despair.

Also included in the exhibition are sketches from the graphic novels and examples of the archaeological information that inspired them. One case study demonstrates how the artist corrected the drawing of a blade based on a 4,000-year-old harpoon. A short film presents the creation of a page - from the initial pencil sketch to the final touches.

Qanga: Drawing the Past is part of the *Anchorage Museum's Northern Initiative*, which explores the current and future state of the North. Learn more at anchagemuseum.org/northerninitiative.



CHRIS AREND

DENA'INAQ' HUCH'ULYESHI

The Dena'ina Way of Living

On view through Jan. 12, 2014

THERE ARE COUNTLESS fascinating stories to hear and traditions to learn about in *Dena'inaq' Huch'ulyeshi: The Dena'ina Way of Living*, the first major exhibition ever presented about the Dena'ina Athabaskan people.

One of the most compelling is that the Dena'ina developed a method of hunting beluga whales that seems to be unique in North America.

The exhibition includes a dramatic, full-scale re-creation of a Dena'ina man harpooning a beluga whale from a spearing platform, called a *yuyqul*. The hunter would cut down a tree with a large root structure. In Cook Inlet when the tide went out, the hunter would dig a hole and place the tree in the wet clay, root side up. The tree would be secured with lines of moose or caribou hide smeared with sticky tree pitch.

When the tide came in, the hunter would paddle out to the tree, climb onto the roots and use them as a spearing platform, waiting for belugas to swim by in pursuit of salmon.

After harpooning a whale, the hunter signaled to his partners waiting on shore with kayaks, or *baydalgi*. The hunters' partners would follow the whale via the sealskin float attached to the harpoon point in it until the animal died, and then they would haul it back to their village. There it was butchered, and oil was rendered from the fat.

The beautiful re-created scene in the exhibition features ambient audio captured at Cook Inlet, so visitors can hear the birds calling and the waves lapping onto shore. A related case houses a short video of Tyonek men hunting beluga in the 1980s using power boats and rifles. The video plays next to a harpoon, or *dineh*, collected from Tyonek in 1883, contrasting traditional methods with those from the 20th century.

Through *Dena'inaq' Huch'ulyeshi* displays, such as the re-created beluga hunting scene, these long-dormant expressions of Dena'ina culture are visible once again.



EXPERTS ON THE FLOOR

10 a.m. to 1 p.m. and 2 to 5 p.m. Nov. 6-9
2 to 5 p.m. Nov. 10

Take advantage of this rare opportunity to speak face-to-face with experts about Dena'ina history and lifeways. These gallery hosts share insight with visitors, answer questions and demonstrate cultural activities in the exhibition. Included with admission

For more information on Dena'ina-related programs, see page 6 or visit anchoragemuseum.org/denaina.



CHRIS AREND

GIVE THE GIFT OF MEMBERSHIP

Choose the gift that keeps giving all year long — a museum membership. Share the member benefits that you value with the people you value most. Members receive free general admission to the museum for 12 months and exclusive discounts at the museum shop and Muse restaurant.

Members also enjoy special discounted pricing on planetarium shows, \$20 off art classes and summer camps, and invitations to special, members-only events.

We now offer gift memberships at anchagemuseum.org/membership. Gift memberships are available at the Individual, Family, Sustaining and Contributing levels.

Complete your purchases online or in person at the museum front desk by Dec. 10, to ensure your gifts reach recipients before Dec. 25.

For more information, call 929-9228 or visit anchagemuseum.org/membership.

Member discounts are not applicable to the purchase of gift memberships.

HAPPY HOLIDAYS

WONDERLAND OF TOYS

On view Dec. 3 through Jan. 12, 2014

'Tis the season to cherish time with friends and family. For many Alaska families, visiting the museum to see *Wonderland of Toys* is a beloved holiday tradition. Against a backdrop of twinkling lights, find carousel horses, World War I toy soldiers, and a towering evergreen tree decorated with more than 100 dolls dressed in costumes representing countries around the world. Other exhibition highlights include a hand-painted wood Schoenhut Humpty Dumpty circus from the early 1900s.

HOLIDAY EVENTS CRAFTS WEEKEND

The 25th annual Crafts Weekend returns Thanksgiving weekend with a variety of unique Alaska-made jewelry, pottery, woodwork and more from 50 Alaska artists. The 20th annual ReadAlaska Book Fair happens simultaneously and features Alaska authors and illustrators.

HOLIDAY CONCERT

Hear those sleigh bells jingling 1 to 4 p.m. Sunday, Dec. 8 at a holiday concert featuring the Anchorage Concert Chorus. Admission is free all day thanks to Wells Fargo.

MUSEUM SHOP SALE

Take advantage of huge holiday discounts at the Anchorage Museum shop Dec. 3-8. Museum members receive 30 percent off all regularly priced items, and non-members receive 20 percent off. You'll find gifts to suit anyone on your list, including Alaska Native art, educational kits, locally made jewelry, unique ornaments and gift cards.

WHAT'S HOT IN THE SHOP

Ties express individuality. They can be conversation starters, fashion statements – and they make great holiday gifts. The Anchorage Museum shop offers unique silk ties with designs by Northwest Coast artists. Artist Maynard Johnny Jr., who is Salish and Kwakwaka'wakw, transforms stories he learned from his elders into contemporary art: "These stories have become an intimate portrayal of who I am and where I come from." His tie, *Whale and Thunderbird* (pictured on the far right) is available to museum members for \$34.20 (regular price \$38). Also pictured are *Eagle* by Tsimshian artist Phil Gray and *Chief of the Seas* by Haida artist Donnie Edenshaw.



CHRIS AREND



CHRIS AREND

THANK YOU, SHELL

We thank Shell Exploration and Production Co., the newest sponsor of the Imaginarium Bubble Space, one of the museum's most visited exhibits. Through this generous contribution, Shell continues its support for educational programs, especially those focused on science, technology, engineering and math.



GIVE A GIFT TO YOURSELF AND YOUR COMMUNITY

You matter! Your membership supports the museum's mission. The Anchorage Museum welcomed 186,979 visits last year. Those visitors' discoveries and growth wouldn't have been possible without you. However, there is still so much more we can do with your continued or increased support. As you plan your charitable giving

at year's end, we hope you will consider an additional gift to the Anchorage Museum. Your gift – no matter the amount – helps support free admission days, exhibitions and educational programs that enrich our youth and our community. Make your gift online at anchagemuseum.org/donate or 929-9226.

IN MEMORIAM

LOUISE GALLOP, BROOKE MCPHETERS AND JOHN REEDER

Louise Gallop, 90, was one of our most dedicated volunteers. She volunteered here for 34 years, both as a docent and in the shop. Her engaging docent tours included special stops at several objects she donated to the Alaska History Gallery, including gold nuggets that came from her gold claim. As a docent she once said that she "gives the longest tours in existence because I can't bear to leave anything out."

Brooke McPheters, 15, was so eager to volunteer in the Imaginarium Discovery Center, she started the week she turned 13, the youngest we accept volunteers. Her enthusiasm for science and discovery was contagious. We often scheduled new volunteers for her shifts because after just a few hours with Brooke, they would be more confident and excited about sharing science with others.

A talented lawyer with a passion for history and photography, John Reeder, 71, was a longtime supporter of the Anchorage Museum and served for many years as a board member for the Cook Inlet Historical Society. As the museum expansion progressed, John was instrumental in drafting the new municipal ordinance for the museum and its operations. He will be remembered for his commitment, intelligence and good humor.

To read special tributes to these remarkable people, please visit anchagemuseum.org/news.

HOURS

MUSEUM
Winter
Through April 30
10 a.m. to 6 p.m.
Tuesday through Saturday
Noon to 6 p.m. Sunday
Closed Monday

SHOP
Open during museum hours

MUSE
11 a.m. to 3 p.m.
Tuesday and Wednesday
11 a.m. to 3 p.m. and
4 p.m. to 9 p.m.
Thursday through Saturday
Noon to 4 p.m. Sunday
Closed Monday

ATRIUM SNACK BAR
Open during museum hours

ADMISSION

Free to museum members
\$15 adult
\$12 Alaska resident adult
\$10 senior/student/military
\$7 age 3 to 12
Free age 2 and younger

Follow us on



MERRY MUSEUM

**Holiday exhibit,
concert return**

p. 10



EPIC JOURNEY

**History told in
graphic-novel style**

p. 8



FAMILY DAY

**Celebrate Alaska
Native heritage**

p. 6

NOVEMBER/DECEMBER NEWSLETTER 2013 www.anchagemuseum.org

NONPROFIT ORG.
U.S. POSTAGE
PAID
PERMIT NO. 84
ANCHORAGE, AK



ANCHORAGE MUSEUM AT RASMUSON CENTER
625 C Street, Anchorage, AK 99501



**Alaska State
Council on the Arts**
The Anchorage Museum
Associations is supported in part
by the Alaska State Council on the Arts and the
National Endowment for the Arts



ANCHORAGE
MUSEUM TODAY



ANCHORAGE MUSEUM ASSOCIATION

BOARD OF DIRECTORS

Gloria O'Neill, *Chair*
Susan Knowles, *Vice Chair*
Todd Bell, *Treasurer*
Karen Compton, *Secretary*
Barbara Donatelli
Heather Flynn
Leonard Hyde
Jim Kostka
Steve Lindbeck
Evan Rose
Tim Thompson
Louis C. Ulmer

ADMISSION

Free to museum members
\$12 adult
\$9 senior/student/military
\$7 ages 3 to 12
Free ages 2 and younger

MUSEUM MEMBERSHIP

(907) 929-9228
or at the museum shop

VOLUNTEER

(907) 929-9297

EVENT RENTAL

(907) 929-9261

ATWOOD RESOURCE CENTER

(907) 929-9235

PARKING

Public parking in underground
garage on weekends and evenings,
with handicap parking during all
regular museum hours

ANCHORAGE MUSEUM
AT RASMUSON CENTER

625 C Street
Anchorage, Alaska 99501
(907) 929-9200 tel
(907) 929-9290 fax
www.anchagemuseum.org

ANCHORAGE MUSEUM TODAY

September/October ©2012
Anchorage Museum Association
Editor: Sarah Henning

The Anchorage Museum at Rasmuson Center is owned by the Municipality of Anchorage and operated under contract by the Anchorage Museum Association, a nonprofit 501(c)(3) organization.

The museum is accredited by the American Association of Museums and is supported in part by annual contributions from the Anchorage Museum Association, the Anchorage Museum Foundation, the Municipality of Anchorage and private, corporate and foundation funds.

IMAGES

Cover

© Gunther von Hagens, Institute for Plastination, Heidelberg, Germany, www.bodyworlds.com

p.3 (clockwise)

Anchorage Museum summer camp, Chris Arend; Oscar Avellaneda-Cruz, *Regalia*, RA-4 print; Don Sheldon during a Bradford Washburn-led Mt. McKinley expedition, 1955, Ward Wells Collection, Anchorage Museum; Bootlegger's Ball, Annie Brace; Da-ka-veen Mehner, *Finding My Song*, detail, wood and rawhide, 2012; Honore Buckley, *Beaded Braid Necklace*, lampwork beads and seed beads, 2010, Elise Strauss; © Gunther von Hagens, Institute for Plastination, Heidelberg, Germany, www.bodyworlds.com

Back page

Bootlegger's Ball, Annie Brace; Da-ka-veen Mehner, *Finding My Song*, detail, wood and rawhide, 2012; drummer boy, iStockphoto.com

letter from the director



THE ANCHORAGE MUSEUM

community recently lost three invaluable friends. Mary Louise Rasmuson, Brian E. Davies and

Glen D. Chambers each demonstrated an unwavering commitment to the Anchorage Museum's future and the betterment of Alaska.

Mary Louise Rasmuson (April 11, 1911 – July 30, 2012) was a founder of, and major contributor to, the Anchorage Museum. For the 1967 Alaska Purchase Centennial, the federal government created a fund to build museums in Alaska. Anchorage's share of the fund was \$135,000. Through the fundraising efforts of Elmer and Mary Louise Rasmuson, individuals and businesses donated \$354,000 for a museum and fine arts building. Mary Louise led a successful campaign encouraging Anchorage voters to approve a \$400,000 museum bond. The first museum building was constructed in 1968 for \$520,000.

The municipality established a nine-member Historical and Fine Arts Commission to advise the mayor and city council on museum policy and to provide community input for them and the museum's director. Mary Louise served as the commission's chair for 21 years.

The Rasmusons also donated \$50 million in 1998 for the museum's latest expansion project; the museum was subsequently renamed the Anchorage Museum at Rasmuson Center. Mary Louise Rasmuson's legacy lives on through a world-class museum she and Elmer helped envision and shape through their unwavering support and generosity.

The Rasmusons' exceptional devotion to museums was recognized nationally in 2000, when they were honored with the American Association of Museums Medal for Distinguished Philanthropy.

Mary Louise Rasmuson passed away July 30 at the age of 101. But the bronze sculpture of her in the museum's atrium ensures her legacy here is never forgotten.

Brian Davies (Aug. 11, 1940 – June 8, 2012) also is memorialized at the museum, with the fourth floor Brian E. Davies Chugach Gallery. He was a major catalyst for change at the Anchorage Museum. After he retired as a geologist and petroleum engineer, he devoted 10 years of his life to chairing the museum's building committee.

An insightful and thoughtful leader, Brian served on the Anchorage Museum Association and Anchorage Museum Foundation boards until his death in June from cancer.

Anchorage Museum Foundation Board member Glen D. Chambers (Sept. 13, 1919 – July 30, 2012) passed away July 30. He was a founding member of the Anchorage Museum Foundation Board of Directors, where he helped guide the foundation and manage its endowment for more than 20 years — a period when the foundation grew substantially. Glen and his wife, Esther, were longtime committed museum supporters, volunteers and advocates, donating countless hours and funds to ensure the success of the organization.

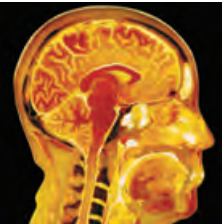
Glen Chambers', Brian Davies' and Mary Louise Rasmuson's dedication, generosity and community mindedness serve as models to us all. Without them, the museum would not be what it is today. We are eternally grateful.

James Pepper Henry DIRECTOR AND CEO





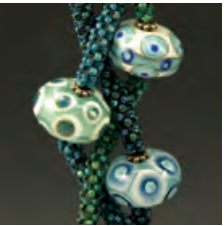
table of contents



4 **BODY WORLDS**
See what you're
really made of



8 **RAREFIED LIGHT**
Alaska's best fine
art photography



6 **WHAT'S NEW**
Upcoming events,
including the annual
Bead Society event



9 **HISTORY BUFFS**
CIHS announces
history lecture series



8 **FINDING HIS SONG**
Mehner's installations
inspired by family



11 **BOOTLEGGERS' BALL**
Party like it's 1925
at museum fundraiser

BODY WORLDS

VITAL

On view Sept. 28 through Jan. 6, 2013

UPON CONTEMPLATION, the human body's inner workings truly are astounding. For example, as you read this sentence, your nervous system is carrying messages between your eyes and your brain at more than 100 miles per hour.

The touring science exhibition *Body Worlds Vital*, opening Sept. 28 at the Anchorage Museum, is an awe-inspiring opportunity to learn what you're really made of. The exhibition explores human anatomy, physiology and health through real bodies and organs.

Gunther von Hagens' *Body Worlds* is the original anatomical exhibition series, displaying authentic human bodies willed by donors. There are seven different *Body Worlds* exhibitions touring the world.

Body Worlds Vital focuses on the long-term impact of common diseases, the effects of tobacco use, and the mechanics of artificial body parts such as knees and hips. Displays include a dozen full-body specimens, lungs blackened by smoking, a liver shrunk by cirrhosis, and body slices with tumors. By juxtaposing healthy and diseased organs, the exhibition encourages healthy lifestyle choices.

The anatomical specimens on display in the exhibition are authentic. They belonged to persons who expressly declared that their bodies should be made available after their deaths to the Heidelberg Institute for Plastination for the education of physicians and laypersons. For more information, visit bodyworlds.com.

PLAN YOUR VISIT

TICKETS

Members		Non-members	
\$12	Adult (unlimited)	\$20	Adult
\$8	Age 3 to 12 (unlimited)	\$15	Age 3 to 12
Free	Age 2 and younger	Free	Age 2 and younger

Prices include general admission to the museum. Museum members receive unlimited admission: Return to *Body Worlds* as many times as you like for free. Advance tickets are recommended. Advance tickets are for a specific day, but not a specific time. Discounts are available for groups of 10 or more by emailing groupsales@anchagemuseum.org. Learn more and buy tickets at anchagemuseum.org.

IMAGES: All images © Gunther von Hagens, Institute for Plastination, Heidelberg, Germany, www.bodyworlds.com



MEMBER PREVIEW

Be the first to see *Body Worlds Vital*. Museum members may attend an exclusive preview Sept. 27 before the exhibition opens to the general public. Doors open at 3 p.m. and close at 9 p.m. Tickets cost \$12 for adult members and \$8 for child members. Advance tickets for the member preview are recommended and available at the front desk only. At 7 p.m. Dr. Angelina Whalley of *Body Worlds* discusses the plastination process used to preserve exhibition specimens. For more information, call 929-9228.

Support for this exhibition is provided by



Alaska Cardiovascular
Research Foundation



The Norton-Cruz Family Fund

Louise Gallop



PUBLIC EVENTS

Enhance your *Body Worlds Vital* experience through these educational programs.

SCIENTIST ON THE FLOOR
DR. ANGELINA WHALLEY
4 to 6 p.m. Friday, Sept. 28
Included with exhibition ticket

Dr. Angelina Whalley, director of *Body Worlds' Institute for Plastination*, answers your questions in the exhibition.

FITNESS ON THE FLOOR
2 to 4 p.m. Saturday, Sept. 29
Included with exhibition ticket
Discover how to achieve a healthier you with expert advice from fitness and diet pros. Personal trainers and a dietician from The Alaska Club answer your health and fitness questions.

BONES UNCOVERED
2 to 4 p.m. Saturday, Oct. 20
Included with admission
Use your detective skills to identify mammal bones provided by the Alaska Consortium of Zooarchaeologists, or bring your animal bone finds for identification. Children also can dig into bone-themed arts and crafts.

LECTURE
A BRIEF HISTORY OF ART AND ANATOMY
7 p.m. Thursday, Oct. 25 Free
Maine artist Sarah Yakawonis discusses the history of anatomy in art, from early sketches by Leonardo DaVinci to contemporary figurative art.

OPEN CRAFT
ANATOMY
2 to 4 p.m. Saturday, Oct. 27
Included with admission
Learn how to transform anatomical drawings from medical textbooks into original works of art using common craft supplies, from rhinestones to pipe cleaners. Led by artist Sarah Yakawonis.

ADULT ART CLASS
FIGURE DRAWING
6:30 to 8:30 p.m. Thursdays, Sept. 20-Oct. 25
\$170 member/\$190 non-member
One of the greatest challenges for an artist is to portray the human body. Students learn techniques for representing the human form, study human anatomy in *Body Worlds Vital* and draw from live models. Taught by artist Shanley McCauley.

FOR FAMILIES

Nearly 34 million people, including millions of children, have seen *Body Worlds* exhibitions around the world. The Anchorage Museum recommends the exhibition for children in grades 5 and above. But parents know their children best, and we recommend parents visit anchagemuseum.org to learn more about the exhibition before visiting with children. The museum will supply family guides to enhance interaction with children in the exhibition.



SEPTEMBER/OCTOBER



COURTESY ALBERT WHITEHEAD

Star the reindeer

SUNDAY FUN DAY

NORTHERN ANIMALS

2 to 4 p.m. Sunday, Sept. 9

Included with admission

Unleash your child's animal instinct during this wild event. Watch live animal presentations by Alaska Zoo and museum educators, meet Star the reindeer, spot paper birds using binoculars in the Imaginarium Discovery Center and solve an arctic animal puzzle in the *True North* exhibition.



ELISE STRAUSS

Honore Buckley, *Beaded Braid Necklace*, lampwork beads and seed beads, 2010

BEAD ARTS GALA

10 a.m. to 6 p.m. Saturday, Oct. 13

Noon to 5 p.m. Sunday, Oct. 14 Free

Meet more than 50 bead artists from across Alaska and shop their exquisite artwork at the state's premier bead show. Activities include bead-making demonstrations and a make-it, take-it table. This year's Alaska Bead Society event features Honore Buckley, who handcrafts lampwork glass beads. Museum members receive a 10 percent discount on purchases.

EVENTS

SMITHSONIAN SPOTLIGHT

EXPANDING TRADITION



7 p.m. Thursday, Sept. 6
Included with admission
Da-ka-xeen Mehner

discusses his new solo exhibition. In these multimedia installations he explores his multicultural heritage, ancestry and family history. Read more on page 8.

FIRST FRIDAY



6 to 9 p.m., Sept. 7 Free
Meet artist Da-ka-xeen Mehner and enjoy live blues-rock by Silver Train in Muse.

ELEVATOR MUSIC

WHISTLE PIG



6 to 9 p.m.
Friday, Sept. 7 Free
We're redefining

elevator music: What was once background noise is now an upbeat, live concert experience. Board the museum's oversize elevator and enjoy the old-time band Whistle Pig.

ARTIST ON THE FLOOR

DA-KA-XEEN MEHNER



7 to 9 p.m. Friday, Sept. 7
Included with admission
Ever see an exhibition and wish you could talk to the artist about it? Here's your chance. Da-ka-xeen Mehner answers your questions about his solo exhibition.

CURATOR'S TOUR



Noon Friday, Sept. 21
Included with admission
Join anthropologist

Aron Crowell for a tour of the Smithsonian Arctic Studies Center.

BODY WORLDS VITAL MEMBER PREVIEW



3 to 9 p.m.
Thursday, Sept. 27 \$8-12
Museum members

may attend an exclusive *Body Worlds Vital* preview. At 7 p.m. Dr. Angelina Whalley discusses the process used to preserve *Body Worlds* specimens. Read more on page 4.

SCIENTIST ON THE FLOOR

DR. ANGELINA WHALLEY



4 to 6 p.m.
Friday, Sept. 28
Included with
premium exhibit ticket

Get an inside look at *Body Worlds Vital* with Dr. Angelina Whalley.

FITNESS ON THE FLOOR



2 to 4 p.m.
Saturday, Sept. 29
Included with
exhibition ticket

Discover how to achieve a healthier you with expert advice from fitness and diet pros. Personal trainers and a dietician from The Alaska Club answer your health and fitness questions.

SMITHSONIAN SPOTLIGHT

ALASKA'S FOOD CULTURE



7 p.m.
Thursday, Oct. 4 Free
Tlingit chef Rob

Kinneen discusses Alaska's indigenous and contemporary food culture.

FIRST FRIDAY



6 to 9 p.m., Oct. 5 Free
Enjoy two exhibit openings and live jazz by Melissa Bledsoe Fischer in Muse.

OPEN CRAFT

GLITTER SKULLS



6 to 8 p.m.
Friday, Oct. 5 Free
Decorate paper skulls with glitter during this open craft activity anticipating *Dia de los Muertos* (Day of the Dead) and Halloween.

BOOTLEGGER'S BALL



7 p.m. to midnight
Friday, Oct. 19 \$50-\$100
Get ready for a rip-Roaring Twenties party! Dive in to the glamorous Jazz Age and support a good cause - the museum's education programs. Purchase tickets at the museum's front desk or anchorage.museum.org. Read more on page 11.

OBER 2012



CHRIS AREND



RACHEL NANINAAQ EDWARDSON

History of the Inupiat: Project Chariot filming

WELLS FARGO FAMILY FREE DAY

HISPANIC HERITAGE FAMILY DAY

2 to 4 p.m. Sunday, Oct. 7 Free

Celebrate Hispanic Heritage Month with a rich cultural experience. Enjoy live music by Trio Los Andinos and create paper skulls inspired by Dia de los Muertos (Day of the Dead). Museum general admission is free all day thanks to Wells Fargo.

FILM


HISTORY OF THE IÑUPIAT: PROJECT CHARIOT

3 p.m. Sunday, Oct. 14 Free

In 1958, the U.S. Atomic Energy Commission planned to detonate thermonuclear bombs near North America's oldest continually inhabited settlement. This documentary by Iñupiaq filmmaker Rachel Naninaaq Edwardson tells the dramatic story of an Iñupiaq village that stopped the most powerful agency of its time. This film's Anchorage premiere is in anticipation of the Alaska Federation of Natives conference. A Q&A follows.

EXHIBITS


BONES UNCOVERED

 2 to 4 p.m.
Saturday, Oct. 20
Included with admission

Use your detective skills to identify mammal bones, or bring your animal bone finds for identification by the Alaska Consortium of Zooarchaeologists.

LECTURE


A BRIEF HISTORY OF ART AND ANATOMY

 7 p.m. Thursday, Oct. 25
Free
Sarah Yakawonis

discusses the history of anatomy in art from sketches by Leonardo DaVinci to contemporary figurative art.

OPEN CRAFT

ANATOMY

 2 to 4 p.m.
Saturday, Oct. 27
Included with admission

Transform anatomical drawings from medical textbooks into original works of art using common craft supplies. Led by artist Sarah Yakawonis.

ALL ALASKA JURIED XXXIV

On view Oct. 5
through Feb. 3, 2013

This Alaska contemporary art exhibition had not been juried at the time of publication. Look for more information about this exhibition online and in the November/December issue of *Anchorage Museum Today*.

TOURS

Daily through Sept. 30.
Included with admission.

10,000 YEARS OF ALASKA
HISTORY 11 a.m. and 1 p.m.

ART OF THE NORTH Noon

FIRST PEOPLES OF ALASKA 2 p.m.

Events are subject to change.
During free events, fees still
apply for premium exhibits and
planetarium shows.

Find more information on
these and other programs at
anchagemuseum.org.

CLASSES

Learn more and register at
anchagemuseum.org or
(907) 929-9280.

ADULT

FIGURE DRAWING

6:30 to 8:30 p.m.
Thursdays, Sept. 20-Oct. 25
\$170 member/\$190 non-member
Students learn techniques for representing the human form and draw from live models. Taught by artist Shanley McCauley.

SCREEN PRINTING I

1 to 4 p.m.
Saturdays, Sept. 22-Oct. 27
\$190 member/\$210 non-member
Learn homegrown and professional screen-printing methods. Taught by artist Craig Updegrave.

DIGITAL PHOTO BOOT CAMP

6:30 to 8:30 p.m.
Mondays, Sept. 24-Oct. 29
\$170 member/\$190 non-member
Take your digital photography skills to the next level. Taught by artist Carl Battreall.

PLANETARIUM

Schedule through Sept. 30. Prices vary
from \$4 to \$10 (\$2 member discount).
Buy tickets at anchagemuseum.org.

EARTH, MOON AND SUN

11:30 a.m. Saturday and Sunday

GUIDED STAR SHOW

12:30 p.m. Saturday and Sunday
6:30 p.m. First Friday

EXPERIENCE THE AURORA

2 p.m. daily

NEW HORIZONS

3 p.m. daily

WONDERS OF THE UNIVERSE

4 p.m. Monday through Wednesday

CONTEMPORARY COSMOS

4 p.m. Thursday through Sunday

LED ZEPPELIN COSMIC LIGHT SHOW

5 p.m. Monday, Wednesday,
Friday and Saturday

DARK SIDE OF THE MOON

5 p.m. Tuesday, Thursday and Sunday

WISH YOU WERE HERE

7:30 p.m. First Friday

FINDING MY SONG

Da-ka-xeen Mehner Solo Exhibition

On view Sept. 7 through Nov. 11

WHEN DA-KA-XEEN MEHNER'S grandmother spoke her Tlingit language in school as a young girl, her teachers would wash her mouth out with soap to “encourage” her to speak English.

This is just one of the family stories that Mehner drew upon to create work for his exhibition, *Finding My Song*, a personal look at the retention and reclamation of language.

Born in Fairbanks to a Tlingit/N’ishga mother and a Caucasian father, Mehner’s art reflects his own multicultural heritage — and the accompanying social expectations and definitions.

Mehner was raised in two Alaska environments, both as an urban Native in Anchorage and as a rural hippie in Fairbanks without electricity, running water or phone. From these perspectives, he studies the constructs of Native American identity and his life within and outside them.

His uncle, artist and educator Larry McNeil, was an early influence. McNeil gave Mehner his first medium- and large-format cameras, igniting in him an interest in photography and a career in art. His study of the visual history and writings of and about Native Americans led him to artistically reinterpret archival images of Native peoples in his own work.

Tlingit art history is central to his art, and he draws inspiration from its forms. The Tlingit form-lines’ bilateral design can be seen in his photography and also in his double-headed daggers, bentwood boxes and masks. All are part of his visual language, presenting an expanded view of tradition.

Much of the work in this exhibition expresses Mehner’s belief that culture transcends generations through music — in this case the drum. Mehner was strongly influenced by an experience he shared with his young son while at Celebration, a biennial festival of Tlingit, Haida and Tsimshian tribal members in Juneau. Transfixed by the drumming he experienced there, his son began to drum. He drummed so passionately that soon his drum had to be reskinned. The drums in this exhibition are used as surfaces for projections and represent the reclamation of language.

Mehner’s work has been exhibited throughout the United States and is in the collections of the Anchorage Museum; University of Alaska Museum of the North, Fairbanks; Institute of American Indian Arts Museum, Santa Fe, N.M.; and the Alaska State Museum, Juneau. He is an assistant professor of Native Arts at UAF, where he is also director of the Native Arts Center.

This exhibition is presented as part of the Patricia B. Wolf Solo Exhibition Series. The Anchorage Museum is grateful to the Alaska State Council on the Arts; the National Endowment for the Arts, a federal agency; the Municipality of Anchorage; and the Anchorage Museum Foundation’s Alaska Airlines Silver Anniversary Fund for ongoing support of the museum’s important solo exhibition series.

IMAGES Da-ka-xeen Mehner, *Finding My Song*, details, wood and rawhide, 2012



Rarefied Light 2012

On view Sept. 5 through Nov. 25

RAREFIED LIGHT, an annual juried exhibition organized by the Alaska Photographic Center, showcases the best of Alaska’s fine art photography.

Juror Cig Harvey of Rockport, Maine, selected 61 photographs from 641 submissions by 109 Alaska artists. She awarded Best of Show to Eagle River photographer Maggie Skiba for *Taurus*, a pigment ink print on cotton rag

Maggie Skiba, *Taurus*, pigment ink print on cotton rag



rag. This is the second time Skiba has taken home *Rarefied Light's* Best of Show award.

"Due to the high caliber of work submitted, it was extraordinarily difficult to select the Best of Show and Honorable Mentions, but in the end the work of Maggie Skiba exemplified the spirit of the award, as both form and content were so beautifully realized," Harvey said.

Honorable Mentions were given to artists Brian Adams, Laura Avellaneda Cruz, Oscar Avellaneda-Cruz, Hal Gage, Loren Holmes, Matt Johnson and Janice Parsley.

After the exhibition closes in Anchorage, it will travel to Fairbanks, Kenai and Kodiak.

cook inlet historical society 2012-13 lecture series

THE CENTENNIAL OF FLIGHT IN ALASKA



IMAGES: Northern Consolidated Cargo, c. 1960s; Noel Wien, c. 1920s; Noel Wien during the first flight across Alaska's Arctic Circle, 1927. All images by Ward Wells, Wien Collection, Anchorage Museum.

This free, historical lecture series is presented by the Cook Inlet Historical Society and the University of Alaska Anchorage Honors College. The 2012-13 season is designed around *Arctic Flight: Artifacts of Alaska Aviation*, on view February through August 2013 at the Anchorage Museum. The exhibition celebrates the 100th anniversary of powered flight in Alaska. Learn more at anchagemuseum.org.

**THE HISTORY OF JOINT BASE
ELMENDORF-RICHARDSON**

7:30 p.m. Thursday, Sept. 20

Speaker: Douglas Beckstead, JBER historian

During the past 72 years, JBER has been key to America's defense. Learn about the base's history and its major functions today.

**CELEBRATING 80 YEARS
OF ALASKA AIRLINES**

7:30 p.m. Thursday, Oct. 18

Speakers: Bill MacKay, Susan Bramstedt and Marilyn Romano, former and current Alaska Airlines executives

A history of Alaska's largest airline and a discussion about the company's future.

ON THE WINGS OF EAGLES

7:30 p.m. Thursday, Nov. 15

Speaker: Leslie Fried, Alaska Jewish Museum curator

The story of the Alaska pilots who transferred refugees over enemy territory to safety in Israel.

ARCTIC FLIGHT

7:30 p.m. Friday, Feb. 1, 2013

Speaker: Jeremy Kinney, Smithsonian National Air and Space Museum curator

Arctic Flight's co-curator introduces the exhibition and discusses how powered flight has shaped life in Alaska.

AIR AGE CARTOGRAPHY

7:30 p.m. Thursday, Feb. 21, 2013

Speaker: Terrence Cole, University of Alaska Fairbanks history professor

The prevailing image of Alaska is at the far edge of the Earth, but once it was the center of the world.

ANCHORAGE AVIATION HISTORY

7:30 p.m. Thursday, March 21, 2013

Speaker: Norman Lagasse, Alaska Aviation Museum consultant

The trials and achievements of Southcentral Alaska's first pilots.

WRANGELL MOUNTAIN SKYBOYS

7:30 p.m. Thursday, April 18, 2013

Speaker: Katie Ringsmuth, National Park Service historian

Tales of famous pilots who flew over some of Alaska's most rugged terrain to establish aviation in the Wrangell-St. Elias region.

THE VISUAL FLIGHT RULES ROUTE TO RUSSIA

7:30 p.m. Thursday, May 16, 2013

Speaker: Felix Maguire, Alaska Airmen's Association historian

Recent Russian legislation allows more open airspace in Russia. Learn what role Alaskans played in developing this new aviation opportunity.

**19TH ANNUAL JOHN BAGOY
MEMORIAL CEMETERY TOUR**

7 p.m. Friday, June 21, 2013

Speakers: Audrey and Bruce Kelly

Explore Anchorage's past during this annual cemetery tour. Meet at the cemetery entrance at Cordova Street and Seventh Avenue.

BOOTLEGGERS BALL

It's the cat's pajamas!

7 p.m. to midnight
Friday, Oct. 19

Put on your flapper feathers and fedoras, and prepare to party like a Gatsby. For just one night at the museum's Bootlegger's Ball, you can step back in time to the Roaring Twenties and the glamorous world of *The Great Gatsby*, *The Artist* and *Boardwalk Empire*.

Dust off your Charleston for the dance floor, nosh on ritzy eats and strike a pose in our retro photo booth. Vie for best-dressed in the costume contest and order a post-Prohibition Sidecar at one of three bars. (And no, bathtub gin is not on the menu.)

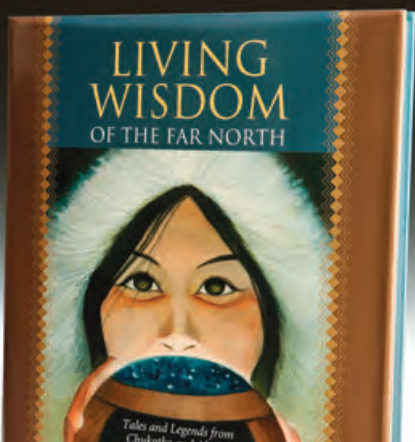
Every swell guy and doll in the city will be there, so don't be a flat tire: Buy tickets today. Early bird tickets are \$50. Starting Oct. 9, tickets are \$60. Prices include one drink ticket.

A limited number of VIP tickets are available for \$100 and include parking in the museum's heated underground garage, two drink tickets and access to a VIP lounge. Purchase tickets at the museum's front desk or anchagemuseum.org.

Proceeds from this fundraiser will support the museum's education programs and the Imaginarium Discovery Center.



Support for this event is provided by



WHAT'S HOT IN THE SHOP

This fall curl up with Alexander B. Dolitsky's *Living Wisdom of the Far North: Tales and Legends from Chukotka and Alaska*. Illustrated by Leigh Rust and Tamara Semenova, this collection of traditional and modern stories is presented in both Russian and English and can be enjoyed by adults and children alike. The book is available to members for \$31.45 in the museum shop.

HOURS

MUSEUM

Summer
Through Sept. 30
9 a.m. to 6 p.m. daily

Winter
Oct. 1 through April 30
10 a.m. to 6 p.m.
Tuesday through Saturday

Noon to 6 p.m. Sunday
Closed Monday

SHOP

Open during museum hours

MUSE

11 a.m. to 3 p.m.
Monday through Wednesday

11 a.m. to 3 p.m. and
4 p.m. through 9 p.m.
Thursday through Saturday

Noon to 4 p.m. Sunday

ATRIUM SNACK BAR

9 a.m. to 6 p.m. daily

ADMISSION

Free to museum members
\$12 adults
\$9 senior/student/military
\$7 ages 3 to 12
Free ages 2 and younger

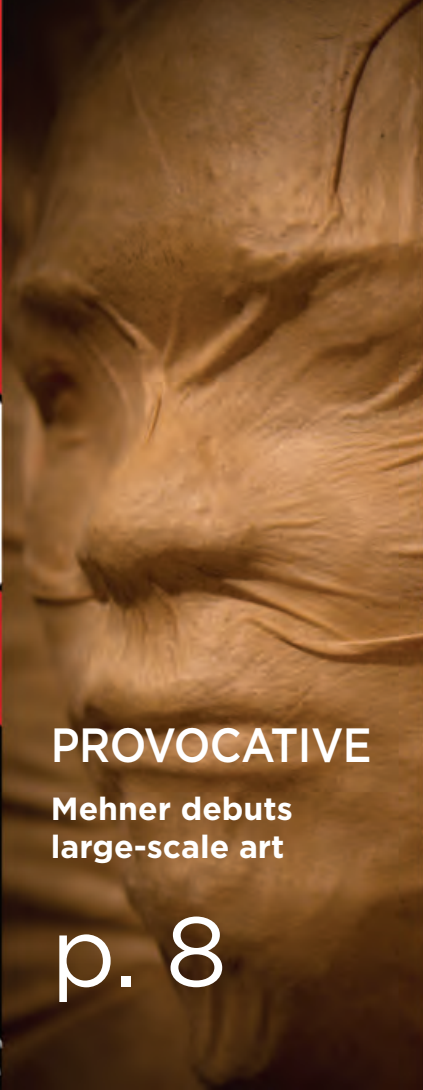
FOLLOW US ON



THE CAT'S
MEOW

Fundraiser revives
Roaring Twenties

p. 11



PROVOCATIVE

Mehner debuts
large-scale art

p. 8



IT'S A FIESTA

Free day celebrates
Hispanic heritage

p. 6

NONPROFIT ORG.
U.S. POSTAGE
PAID
PERMIT NO. 84
ANCHORAGE, AK



ANCHORAGE
MUSEUM

ANCHORAGE MUSEUM AT RASMUSON CENTER
625 C Street, Anchorage, AK 99501



ANCHORAGE
MUSEUM



T
O
D
A
Y

MAY/JUNE 2010

ANCHORAGE MUSEUM ASSOCIATION

BOARD OF DIRECTORS

Gloria O'Neill, *Chair*
Steve Lindbeck, *Vice Chair*
Karen Compton, *Secretary*
Susan Knowles, *Treasurer*
Beverly Beeton
Todd Bell
Barbara Donatelli
Laura Emerson
Joe Griffith
Jan Ingram
Warwick King
John Letourneau
Bernadine Nyboer
Evan Rose
Curtis Smith

ADMISSION

Free to museum members
\$10 adults
\$8 senior/student/military
\$7 ages 3 to 12 (starting May 22)
Free ages 2 and younger

MUSEUM MEMBERSHIPS

(907) 929-9228
or at the museum shop

VOLUNTEER

(907) 929-9297

EVENT RENTAL

(907) 929-9261

PARKING

Public parking in underground
garage on weekends and evenings,
with handicap parking during all
regular museum hours

ANCHORAGE MUSEUM AT RASMUSON CENTER

625 C Street
Anchorage, Alaska 99501
(907) 929-9200 tel
(907) 929-9290 fax
www.anchagemuseum.org

ANCHORAGE MUSEUM TODAY

May/June ©2010
Anchorage Museum Association
Editor: Sarah Henning

The Anchorage Museum at Rasmuson Center is owned by the Municipality of Anchorage and operated under contract by the Anchorage Museum Association, a nonprofit 501(c)(3) organization. The museum is accredited by the American Association of Museums and is supported in part by annual contributions from the Anchorage Museum Association, the Anchorage Museum Foundation, the Municipality of Anchorage and private, corporate and foundation funds.

IMAGE CREDITS

Cover Athabascan *Wild Man* mask,
National Museum of Natural History

p.2 Alaska Native Heritage Center

p.3 (clockwise)
Slow bubble,
Rainer Jensen/Ansel Associates Inc.;
Wonders of the Universe film
still, Evans & Sutherland; sea star,
stock image; Walker Art Center,
Minneapolis Convention and Visitors
Association; origami crane, stock
image; Kathleen Carlo-Kendall,
*No maagh hut'aanenh (Storytellers
from the Coast)*, 2003, yellow cedar;
Smithsonian Arctic Studies Center,
Chris Arend Photography

Back page
Rika Mouw, *Mussel Shell Necklace*,
mussel shells; Inupiaq feast bowl,
Wales, Alaska, 1934, National
Museum of the American Indian;
String Theory,
Paul Friedlander

letter from the director



THIS MONTH

MARKS the culmination and convergence of many projects at the museum that have taken more than a decade to plan, fund

and construct. Our dream was to evolve the museum from a beloved municipal civic center to one of the principal cultural institutions in the circumpolar North. At last, Alaska citizens will see our vision fully realized.

On May 22 the museum debuts the Smithsonian Arctic Studies Center, the new Imaginarium Discovery Center, Thomas Planetarium and the ConocoPhillips contemporary Alaska Native art gallery.

The Smithsonian Arctic Studies Center is an expansion hallmark, featuring more than 600 rare and significant Alaska objects on long-term loan from the Smithsonian Institution. This unprecedented relationship between the Smithsonian and the Anchorage Museum challenges conventional museum practices. The loan terms allow Alaska Native elders, scholars and artists who are working

with the Smithsonian to remove objects from cases to document and perpetuate Alaska Native cultural life ways.

Adjacent to the Smithsonian Arctic Studies Center is the ConocoPhillips Gallery, which showcases the finest examples of contemporary Alaska Native art created by artists such as Susie Silook, Ron Senungetuk and Sonya Kelliher-Combs, among many others.

The new Imaginarium Discovery Center and Thomas Planetarium also debut May 22. A stimulating, hands-on facility focused on earth, life and physical sciences, the center is filled with captivating exhibits. Some exhibits are modeled after exhibits in the world's best science museums, and other exhibits were conceived specifically for this center.

Many citizens, businesses and organizations helped make the museum expansion a reality. Please join us at noon Saturday, May 22 to honor those who have contributed to this endeavor and to celebrate the opening of these incredible spaces.

James Pepper Henry DIRECTOR AND CEO

NEWS AND NOTES

NEW HOURS, RATES

A reminder the museum's summer hours go into effect May 9. Summer hours are 9 a.m. to 6 p.m. daily, open until 9 p.m. Thursday. When the Imaginarium Discovery Center opens May 22, there will be a \$7 museum general admission rate for children ages 3 to 12. Ages 2 and younger are admitted free.

ALASKA CULTURE PASS

Have relatives or friends coming to Alaska this summer? Check out the Alaska Culture Pass, the best price for out-of-state visitors. With the Alaska Culture Pass, for just \$26.95 — a 20 percent discount — visitors get admission to both the Anchorage Museum and the Alaska Native Heritage Center. This pass includes free daily shuttle service between the two attractions. For more information, visit www.alaskaculturepass.net.

DINNER AND A SHOW

Cyrano's Off-Center Playhouse serves up a great play every month. Attend a performance at Cyrano's, take a program and clip the Muse ad good for a free appetizer when ordering a dinner entrée at Muse. Limit one appetizer per party. For a schedule of coming attractions at Cyrano's, visit www.cyranos.org.





table of contents



4 HOMECOMING
New Smithsonian center features long-absent Alaska Native artifacts



7 STARS IN OUR EYES
Planetarium pandemonium begins with two dramatic summer shows



5 NATIVE ART TODAY
New gallery will display museum's contemporary Native art collection



8 KIDS' NEW FAVORITE
Introducing the new Imaginarium Discovery Center



6 WHAT'S NEXT
Upcoming programs and events, including a free family day celebrating Asian Pacific culture



10 NEW BENEFIT
Some members get free admission to Lower 48 art museums

AN EPIC HOMECOMING FOR ALA

SMITHSONIAN CENTER OPENS MAY 22



THE MAY 22 DEBUT of the Smithsonian Arctic Studies Center isn't just a gallery opening. It's a family reunion.

"Many of these objects are like our great-grandparents that are being brought home again," said Paul Ongtooguk, an Iñupiaq adviser to the Smithsonian. "It's a chance for their younger relations to get to know them again. And for those pieces, those parts of the family, to get reacquainted as well."

In the first arrangement of its kind, the Smithsonian Institution is loaning more than 600 Alaska artifacts to their place of origin. These cultural treasures will be exhibited in the new Smithsonian Arctic Studies Center, which is on the second floor of the museum's west wing.

These objects represent cultures that tend to be viewed in the past tense, Ongtooguk said. Alaska Native advisers agreed early on: It's crucial the

new center represent Alaska Native cultures as dynamic and vibrant.

This emphasis is reflected in the exhibition's title *Living Our Cultures, Sharing Our Heritage: The First Peoples of Alaska*. Through contemporary images, video and audio, this exhibition places masterworks of the past into the context of people's lives today. The gallery features iPhone-like touch screens that allow visitors to find anthropological information as well as oral histories from Alaska Native peoples.

"The presentation really gives a voice to these objects, links them to people. Sometimes you don't get that feeling when you go to museums," said Aaron Leggett, a Dena'ina adviser to the Smithsonian.

Over the last decade, more than 40 Alaska Native advisers traveled to Washington, D.C. to help select and interpret

BACKGROUND

The Smithsonian Arctic Studies Center, established in 1988, is a federal research and education program focusing on peoples, history, archaeology and cultures across the circumpolar North. The center is part of the Smithsonian Institution's National Museum of Natural History. In 1994, the center partnered with the Anchorage Museum to open an Anchorage branch. For more information, visit <http://alaska.si.edu>.

CURATOR'S TOUR

Join Smithsonian anthropologist Aron Crowell for a curator's tour of the Smithsonian Arctic Studies Center at noon Friday, June 4. The center will offer various public programs throughout the year. Learn more about scheduled events at www.anchoragemuseum.org.



SKA NATIVE OBJECTS

Smithsonian objects. Most objects are from the late 19th century and have never been displayed: The majority are coming directly from storage. The advisers' legwork for this exhibition resulted in more than 4,000 pages of transcripts in seven different languages.

But in a way, the research has just begun. The exhibition's one-of-a-kind display cases allow removal of objects from the cases. Alaska Native elders, scholars and artists working with museum staff can conduct hands-on studies in a room outfitted with audiovisual equipment to record their findings. The center also includes an archaeology laboratory. As research unfolds, curators will update the exhibition's touch screens to include pertinent new information.

It's a rare arrangement in the museum world. No Smithsonian museum has

ever made a loan that allows handling of objects by community advisers.

"We know that people need to closely examine these objects to study how they were put together," said Smithsonian anthropologist Aron Crowell, who curated the exhibition with assistant curator Dawn Biddison. "This is truly a community resource collection and we're thrilled to be able to use it that way."

IMAGE CREDITS
Clockwise from top left: Haida mask, National Museum of Natural History; St. Lawrence Island Yupik doll, St. Lawrence Island, National Museum of Natural History; Preston Singletary, *Tlingit Hat*, 1992, glass; Inupiaq artist Sylvester Ayek, Smithsonian Institution; Smithsonian Arctic Studies Center, Chris Arend Photography; Tlingit war helmet, Taku, Alaska, 1893, National Museum of Natural History



EXHIBITION CATALOG

Visitors may purchase the exhibition catalog *Living Our Cultures, Sharing Our Heritage: The First Peoples of Alaska* in the Anchorage Museum shop for \$50. Friends of the Smithsonian chose this as its official 2011 book selection: More than 10,000 copies will be given to qualifying Smithsonian donors. The 315-page book features 200 artifacts from the exhibition and emphasizes cultural continuity through essays by 20 Alaska Native authors.



CONOCOPHILLIPS GALLERY

The Anchorage Museum holds an extensive collection of contemporary Native art. This collection will be featured in the new ConocoPhillips Gallery, adjacent to the Smithsonian. The gallery's inaugural exhibit is *(Re)Emergence: Contemporary Native Art and Design from the Anchorage Museum*. Learn more at www.anchagemuseum.org.

MAY/JUNE 2010



D.J. Zhang, Sichuan Opera

COMMUNITY EVENT

OPENING CELEBRATION

9 a.m. to 6 p.m. Saturday, May 22
Included with admission

Celebrate the opening of the Smithsonian Arctic Studies Center, Imaginarium Discovery Center, Thomas Planetarium and ConocoPhillips Gallery. Explore the museum's newest cultural, historical and scientific offerings and enjoy a variety of live entertainment and hands-on family activities. For more information, see page 11.

WELLS FARGO FREE DAY

ASIAN-PACIFIC FAMILY DAY

1 to 4 p.m. Sunday, May 2 Free

Celebrate the Asian-Pacific cultures of Anchorage with colorful performances including dance by the Sichuan Opera and Na Keiki O Hawaii, and drumming by Tomodachi Daiko. Children will enjoy engaging arts and crafts activities such as calligraphy and origami. Admission is free all day thanks to sponsor Wells Fargo.

EVENTS

THEATER SATURDAYS



Noon and 1 p.m. May 1
Included with admission

The history of the Alaska gold rush comes to life with two 15-minute plays: *The Gilded Tusk* by Joan Kane and *The Wheelman* by Tom Moran.

FIRST FRIDAY



6 to 9 p.m. May 7 Free
Enjoy the museum's galleries, arias by

Anchorage Opera artists and contemporary folk music by Chris Snyder and Third Wheel Project.

ARTIST'S EYE LECTURE SERIES WORK FROM FAR AFIELD



8 p.m. Friday, May 7 Free
A longtime resident

of the Bering Straits region, Kathy Mallory paints Alaska's Northwest coast and its people. The artist speaks about a variety of painting techniques and the unique challenges of plein air oil painting.

SUMMER FILMS



10 a.m., 1 p.m. and 4 p.m. daily
May 8 through Sept. 13
Included with admission

Films focusing on Alaska's history, nature, art and culture are shown daily in the museum's auditorium. For a complete schedule, visit www.anchagemuseum.org.

DOCENT TOURS



Noon, 1 p.m., 2 p.m. and 3 p.m. daily
May 8 through Sept. 13
Included with admission

The docent-guided tour 10,000 Years of Alaska History is offered daily at noon, 2 p.m. and 3 p.m. Meet docent at Alaska Gallery entrance (second floor, east wing). At 1 p.m., the docent-guided tour Art of the North meets in the Alaska art galleries (first floor, east wing).

For more information, visit www.anchagemuseum.org.

MOTHER'S DAY BRUNCH



10 a.m. to 3 p.m.
Sunday, May 9

Treat your mom to brunch at Muse, which opens early for Mother's Day. Menu options include Alaskan eggs Benedict with king crab and vanilla French toast. Reservations required. Call 929-9210.

CHRIS SNYDER



5:30 to 9:30 p.m.
Saturday, May 15

Live music by singer-songwriter Chris Snyder and Third Wheel Project in Muse.

BOOK SIGNING

MESSENGER SPIRITS:



Yup'ik Masks and Stories
1 to 3 p.m.
Sunday, May 23 Free

Nicholas and Maria Charles sign copies of their new book in the museum shop. This collection focuses on the legends of the Yup'ik people of southwestern Alaska.

FIRST FRIDAY



6 to 9 p.m. June 4 Free
Enjoy the museum's galleries and live music

by Alaska singer-songwriter Jared Woods and jazz musician Melissa Bledsoe Fischer.



DENNIS LIND
5:30 to 9:30 p.m.
Saturday, June 12

Live classic rock by Dennis Lind in Muse.

MAYOR'S MARATHON PASTA FEED



6 p.m. or 7:30 p.m.
Friday, June 18
\$28 adults, \$18 children

Runners, families and fans can carb up before the Mayor's Marathon at this annual pasta feed in the museum atrium, which includes several different pastas, salad, cookies and punch. Reservations required by June 14 at www.mayorsmarathon.com.



Jessie Hedden, untitled, acrylic and paper collage, *All Alaska Juried XXXI*



Linda Infante Lyons, *Brindal*, oil

EXHIBIT

ALL ALASKA JURIED EXHIBITION XXXIII

On view May 22 through Oct. 3

This popular biennial juried art exhibition was established more than 30 years ago to encourage the creation of new works by Alaska artists in all media. The exhibition was juried by Michael Darling, the Seattle Art Museum’s Jon and Mary Shirley curator of modern and contemporary art. Learn more about this exhibit in the July issue.

CLASSES

WEEKLONG ART CLASSES

June 7-25

Kids ages 5 to 12 can let their imaginations run wild in new summer art classes. These weeklong watercolor, drawing and paper mache classes in June are taught by professional artists and art educators. There’s a special opportunity for adults, as well: Artist Linda Infante Lyons teaches a weeklong workshop on painting realistic pet portraits in oils. See below for complete details.

CLASSES

Information and registration at www.anchoragemuseum.org or 929-9268.

CHILDREN THE VERY HUNGRY CATERPILLAR COMES TO THE MUSEUM

10 a.m. to noon June 7-11
\$70 members/\$90 non-members
Ages 5 to 8 get inside the mind of *The Very Hungry Caterpillar* illustrator Eric Carle and find inspiration for their own art.

UNDER THE SEA WATERCOLORS

1 to 4 p.m. June 7-11
\$80 members/\$100 non-members
Ages 9 to 12 paint the marine animals that live in the museum’s new marine touch tank. Taught by children’s author/illustrator Blanca Echiverri.

PLAYFUL PUPS

10 a.m. to noon June 14-18
\$70 members/\$90 non-members
Ages 9 to 12 create loveable, laughable canine characters out of paper mache with artist Linda Lucky.

FISH TAILS

10 a.m. to noon June 21-25
\$70 members/\$90 non-members
Ages 5 to 8 use the new marine touch tank to inspire paper mache fish. Taught by artist Brenda Jaeger.

MINI MASTERS

1 to 4 p.m. June 21-25
\$80 members/\$100 non-members
Ages 9 to 12 explore museum masterpieces through sketching and storytelling. Young artists learn new drawing and watercolor techniques. Taught by artist Brenda Jaeger.

ADULTS

PET PORTRAITS
6:30 to 9 p.m. June 21-25
\$120 members/\$140 non-members
Students learn to paint realistic pet portraits. Artist Linda Infante Lyons teaches techniques for fur and feathers, as well as capturing a pet’s individual character. Supply list provided.

EXHIBITS

INSPIRED, INVENTIVE AND IRREVERENT:

Contemporary Craft from the Permanent Collection
On view May 22 through Aug. 29
Featuring some of the best contemporary craft pieces in the museum’s collection, this exhibition covers a wide range of finely made, innovative work including textiles, woodworking, basketry and mixed media. Featured artists include Carla Potter, Mark Wedekind, Rika Mouw and Fran Reed.

NATURE REDEFINED

On view May 22 through Aug. 29
In this exhibition of sculpture from the museum’s permanent collection, the artists have employed non-natural materials to create works that redefine nature. Featured artists include Robert Pfitzenmeir, Bill Fitzgibbons, Michael Sirl and Paul Gardinier.

Learn more about these exhibits in the July issue.

CAMPS

EXPLORER CAMPS

June 7-July 23
Summer Explorer Camps are back, and they’ve expanded to include art and history as well as science. Learn more and register at www.anchoragemuseum.org.

PARTNER PROGRAMS

COOK INLET HISTORICAL SOCIETY

BEYOND CABBAGES AND POTATOES
7:30 p.m. Thursday, May 20 Free
Master horticulturist Ayse Gilbert offers a talk on what gardening was like in territorial Anchorage.

15TH ANNUAL JOHN BAGOY MEMORIAL CEMETERY TOUR

7 p.m. Monday, June 21 Free
Historical cemetery tour. Meet at the cemetery entrance on Cordova Street.

IMAGINATIONS IGNITE

New science center blasts off May 22



IMAGE CREDITS Smart Floor, Mine-Control/Zack Booth Simpson; children and sea anemone, stock images

EVERY DAY, PARENTS ASK at the museum front desk: When does the Imaginarium open? Happily, the time has come. On May 22, the museum opens the new Imaginarium Discovery Center, a hands-on science center designed to make earth, life and physical sciences fun for all ages.

The center’s displays spark intellectual curiosity and imagination — the foundations for scientific learning. The center, on the ground floor of the museum’s east wing, houses more than 80 exhibits in its five galleries.

BP KINETIC SPACE

This area focuses on physics, such as principles of energy, force and motion. Exhibits include a hoist chair, which allows visitors to experiment with levers and pulleys to haul themselves vertically, and an air cannon, which allows visitors to aim a pivoting air cannon at moving targets to understand the existence and movement of air.

THOMAS PLANETARIUM/ PLANETARIUM HALL

The planetarium focuses on astronomy and the solar system. (See page 9 for the summer planetarium schedule.) Related exhibits include a moon rock on loan from NASA’s Johnson Space Center and Magic Planet, a 24-inch spherical screen with images projected from inside. The interactive globe uses NASA and NOAA imagery so visitors can see the Earth’s weather patterns in real time.

BUBBLE SPACE

The space features bubbles both as items of play and as tools to understand surface tension, shape and light reflection. It includes a big bubble machine that creates a cylinder-shaped bubble large enough to fit one adult and one child inside.

TOTE KIDSPACE

Everything can be touched in this inquiry-based gallery specifically designed for infants and children through age 5. Exhibits include Smart Floor, a video projection on the floor that responds to movement. As children crawl, walk or run across the floor, it responds like a pond – water ripples, plants and flowers grow and dragonflies flutter. Other tactile experiences include an art wall, book nook and puppet stage.

EARTH AND LIFE SCIENCE

This area focuses on earth sciences including geology, geography and life sciences, with an emphasis on zoology. There are interactive exhibits about volcanoes, earthquakes and tsunamis. Animal-related exhibits include a snapping turtle aquarium, alligator aquarium, moon jellies tank and marine touch tank.



INQUIRING MINDS WANT TO KNOW

WHY IS THE IMAGINARIUM AT THE MUSEUM NOW?

The Imaginarium merged with the Anchorage Museum in June 2008, adding science to the museum’s mission. The Imaginarium’s former facility on Fifth Avenue closed in August 2009. It re-opens May 22 within the Anchorage Museum as the expanded, state-of-the-art Imaginarium Discovery Center.

WHAT DOES IT COST TO VISIT THE IMAGINARIUM?

Since the Imaginarium and the Anchorage Museum are one organization, museum general admission includes the new Imaginarium. An Anchorage Museum membership includes free, year-round Imaginarium access. Planetarium fees vary according to program.

DO YOU STILL HAVE THE BIG BUBBLE?

There’s actually a new bubble machine that’s bigger and better than ever.

WHAT HAPPENED TO THE FORMER IMAGINARIUM’S EMPLOYEES AND ANIMALS?

Science educators from the former Imaginarium are now museum employees. They continue to offer top-notch science programs for museum visitors and school groups. The majority of the former Imaginarium’s animals were brought to the new Imaginarium. One exception was the alligators. They had grown too large, so they were retired to a reptile refuge in Colorado. Replacement baby alligators arrived at the museum in April.

THOMAS PLANETARIUM

11 A.M. ICE WORLDS
5 P.M. WONDERS OF THE UNIVERSE

Showing daily May 23 through Sept. 12
\$4 adult members/\$2 child members
\$5 adult non-members/\$3 child non-members

The new Thomas Planetarium offers museum guests an engrossing, immersive theater experience. Two shows are offered daily in summer. *Ice Worlds* explores the delicate balance between ice, water and the existence of life on Earth and on other planets. *Wonders of the Universe* lets visitors travel back billions of years to witness the birth of the universe. Tickets available at the museum front desk. Enjoy previews of both summer planetarium shows at the May 22 opening celebration. These previews are included with general admission.



MAXIMIZE YOUR MEMBERSHIP

ART LOVERS, REJOICE: The Anchorage Museum just joined the North American Reciprocal Museums program. This program allows museum members at the Sustaining Member level (\$125 per year) and above to receive free general admission to hundreds of participating art museums, including the Museum of Contemporary Art, Los Angeles; Museum of Glass, Tacoma, Wash., and the Heard Museum, Phoenix.

Qualifying members also receive discounts at participating museums on shop and restaurant purchases and tickets to special events.

To receive these benefits, museum members must present a current membership card with a gold North American Reciprocal Museums sticker. If you are a qualifying member and would like this sticker, please ask at the museum front desk or call the membership department at (907) 929-9228. Find a complete list of participating museums at www.anchagemuseum.org.

IMAGE CREDITS Preston Singletary, *Raven*, glass, Museum of Glass; Marty Yuknis, Chris Arend Photography



IN GRATITUDE

THANK YOU, MEMBERS

The museum is proud to count more than 5,000 families — from Alaska and throughout the United States — as current members. This is a record high membership and a tremendous achievement. Through the continued support of members, the museum is able to fulfill its mission and offer high-quality art, history and science programs. Thank you, members!

THANK YOU, STAR WARS SPONSORS

The Anchorage Museum gratefully acknowledges the support of major sponsors for the *Star Wars: Where Science Meets Imagination* exhibition, which closed April 25: AT&T Alaska, BP, ConocoPhillips, TOTE, Alaska Airlines, Alaska McDonald's, CIRI, Norton-Cruz Family Foundation, Steven, Karen, Hugo and Gus Compton, Mary Ann Jacob, MD, Jill Maconachie, DC Municipal Light and Power, Murray Orthodontics, Jack and Sherry Sedwick, and media sponsor KTUU Channel 2.



VOLUNTEER APPRECIATION LUNCHEON

Noon Monday, May 3
Free to museum volunteers

The museum couldn't exist without a dedicated corps of volunteers. In 2009, the museum's 200-plus volunteers contributed more than 23,000 hours of service. To thank them for their hard work and dedication, volunteers are invited to a May 3 appreciation lunch catered by The Marx Bros. in the museum atrium. For more information, call (907) 929-9297.



OPENING CELEBRATION

MAY 22

Join us
for our 'ta da' moment

BE THE FIRST to see the Anchorage Museum's newest attractions at an opening celebration on Saturday, May 22.

This fun-filled event celebrates the completion of the museum expansion and the grand opening of four new spaces: Imaginarium Discovery Center, Thomas Planetarium, Smithsonian Arctic Studies Center and ConocoPhillips Gallery.

From 9 a.m. to 6 p.m., visitors will enjoy live music and dance, demonstrations, talks, book signings and hands-on art, history and science activities for kids. Esteemed museum benefactors, elected officials and the expansion project team will speak at a noon ceremony.

Don't miss headlining act The Git-hoan Dancers, a Tsimshian dance group led by renowned carver David Boxley. The group is Seattle-based, but most of the dancers trace their ancestry to southeast Alaska. Dancing in their striking, carved masks, the performers relay Tsimshian legends such as Mouse Woman and the Cannibal Giant.

The day's activities also include Alaska Native games and dancing by the Alaska Native Heritage Center, wild bird presentations by the Bird Treatment and Learning Center, and a sneak peek at this summer's planetarium shows.

For a complete event schedule, visit www.anchagemuseum.org.



Git-hoan Dancers, Donna Eaton

PLAN YOUR VISIT

HOURS: 9 a.m. to 6 p.m. Saturday, May 22

ADMISSION: Museum members are admitted free. General admission is \$10 adult, \$8 student/senior/military, \$7 ages 3 to 12, free ages 2 and younger. Become a member or renew your membership on May 22 and receive two additional months free.

PARKING: The museum garage will be closed for this event. Free handicapped parking will be available on Sixth and Seventh avenues between C and A streets. Other parking within two blocks of the museum includes free street parking, a pay lot at Sixth Avenue and B Street, and the parking garages at the Fifth Avenue Mall and JC Penney. For more options, visit www.anchagemuseum.org/parking.

HOURS

MUSEUM
May 9 through Sept. 13
9 a.m. to 6 p.m. every day
Open until 9 p.m. Thursday

SHOP
Open during museum hours

MUSE
11 a.m. to 3 p.m.
Sunday through Wednesday
11 a.m. to 9 p.m.
Thursday through Saturday

ATRIUM SNACK BAR
9 a.m. to 6 p.m. daily

ADMISSION

Free to museum members
\$10 adults
\$8 senior/student/military
\$7 ages 3 to 12
(starting May 22)
Free ages 2 and younger

FOLLOW US ON



SUMMER EXHIBITS

Sculpture, craft and
All Alaska Juried

p. 9



ARCTIC STUDIES

Alaska artifacts
return home

p. 8



BRAND-NEW IMAGINARIUM

Where science
is child's play

p. 10

MAY/JUNE NEWSLETTER 2010 www.anchagemuseum.org

NONPROFIT ORG.
U.S. POSTAGE
PAID
PERMIT NO. 84
ANCHORAGE, AK

ANCHORAGE
MUSEUM

ANCHORAGE MUSEUM AT RASMUSON CENTER
625 C Street, Anchorage, AK 99501